

# Modernization of the TA2 vacuum control system

*D. Bloemers, B. Morkot (Central Laser Facility, STFC Rutherford Appleton Laboratory, Harwell Campus, Didcot, UK)*

The new TA2 Vacuum control has been built around the Siemens S7-1200 PLC with a Weintek HMI. Advancements in industrial controllers since the original development have enabled the implementation of several improvements, which provide increased machine safety through more robust monitoring and fault reporting, while maintaining a simple user experience.

The approach taken with the user interface was to provide operators a clear overview of the system showing the status of important elements through text and iconography with particular attention paid to colour so as to still be readable while wearing laser safety glasses.

Additionally due to the processors increased resources the opportunity to incorporate the areas gas control system became available, which will provide a single point of interaction and simplify operations.

Contact: D. Bloemers (Desmond.Bloemers@stfc.ac.uk)

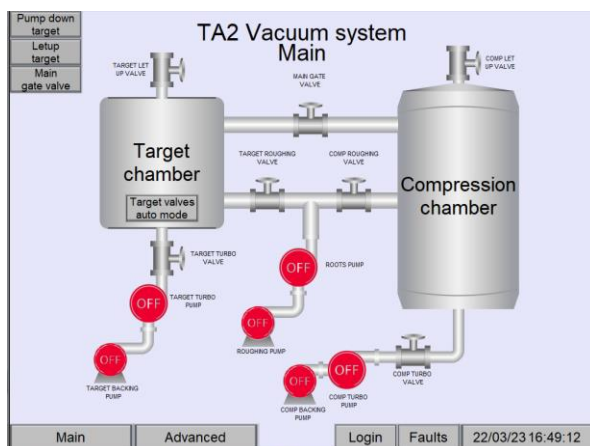


Figure 1:TA2 new GUI