



# Extreme Light Infrastructure

*On the way to ELI ERIC*

**ELI Consultation of UK User Community**  
**London, 11 June 2018**

**Carlo Rizzuto, ELI-DC AISBL, Director General**

- ELI in Brief
- Present Status
- Planning Overview
- Setting up ELI ERIC



ESFRI

Landmark

- 
- ELI ERIC will be the world's most advanced **laser research infrastructure**
  - First **international research infrastructure** built completely in **Central Europe**
  - Funded in synergy between **ESIF, National and Framework** funds, after **EU approval** and delivered through a community effort
  - **...In time and within budget**

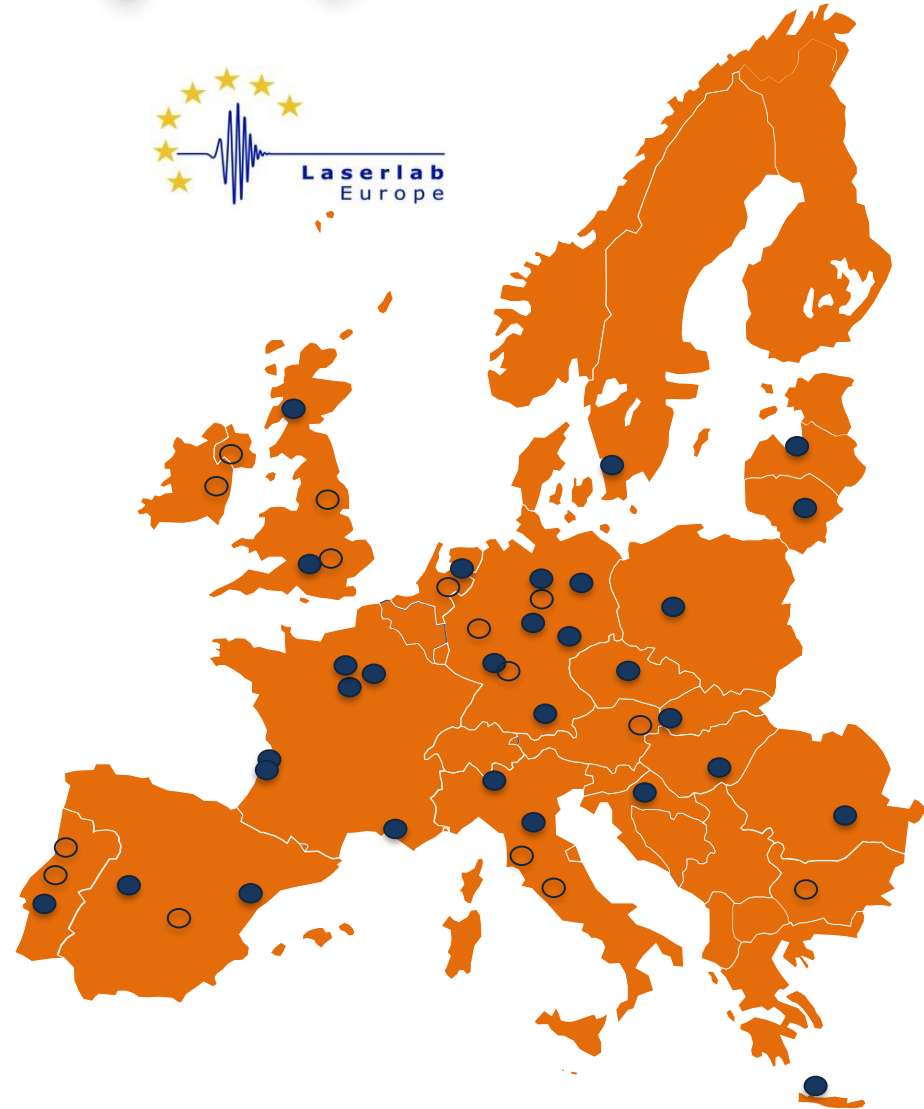
- ELI project approved by ESFRI in 2006: a single Laser infrastructure in the 100 PW range
- The preparatory phase indicated a more gradual approach to these top specifications
- One multi-site Research Infrastructure based on three complementary “Pillars”
- The implementation is being completed by CZ, HU and RO as “Host Countries”
- ELI-DC (three Hosts and FR, DE, IT UK) acting to achieve a longer-term sustainability within one ERIC

# A European Endeavour



- ELI builds on a well-structured research landscape and the success of **Laserlab-Europe**
- Planned as the reference Facility for Laser S&T, “the **CERN of Lasers**”
- **First user experiments end of 2018**

*1,900+ researchers from 25 EU and non-EU Countries have been collaborating during the construction*





***ELI-ALPS***  
***Szeged, Hungary***

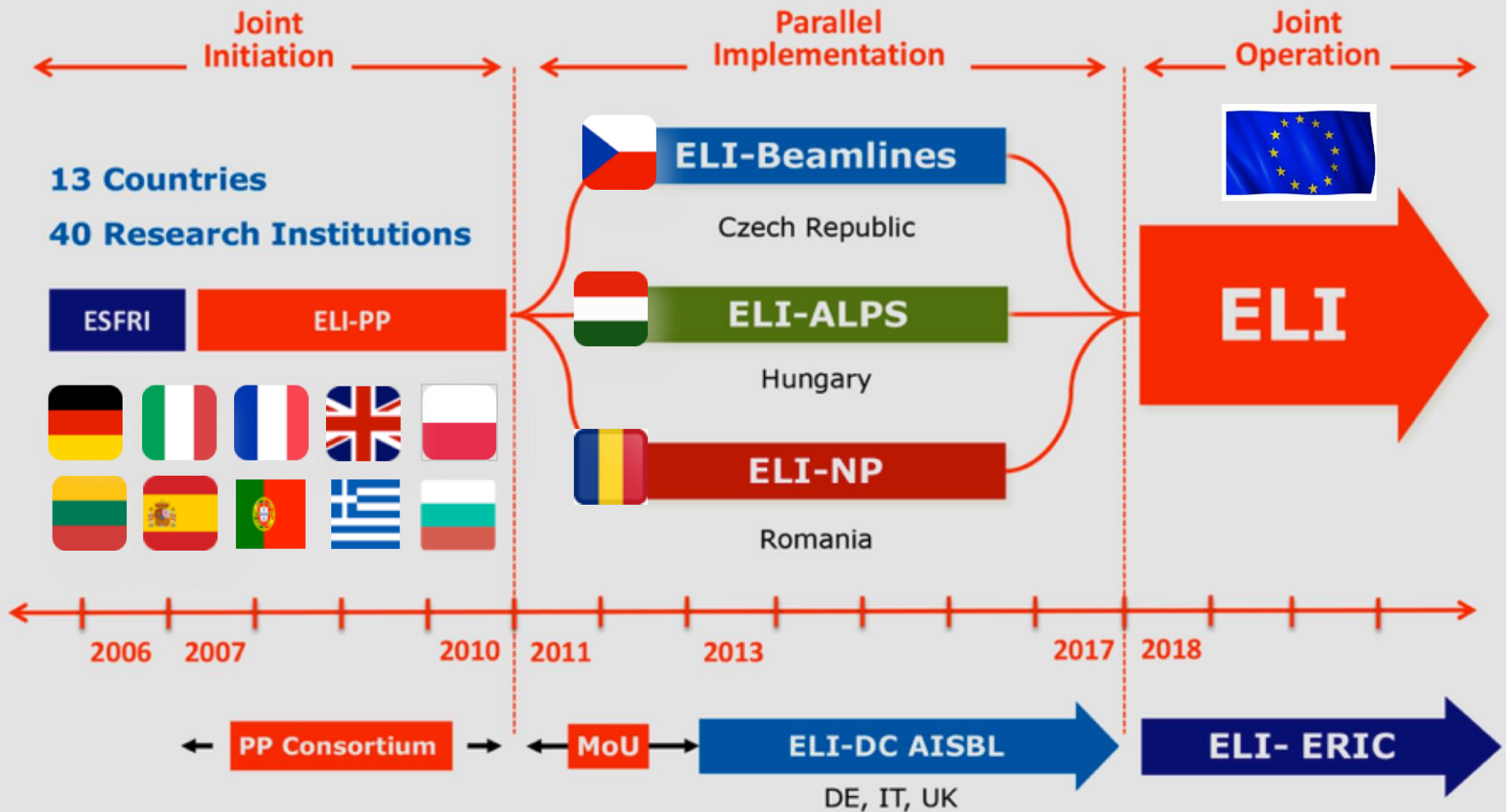
*ELI Beamlines  
Dolní Břežany, Czech Republic*





***ELI-NP  
Măgurele, Romania***





To achieve a fully integrated Facility, some hurdles have to be overcome:

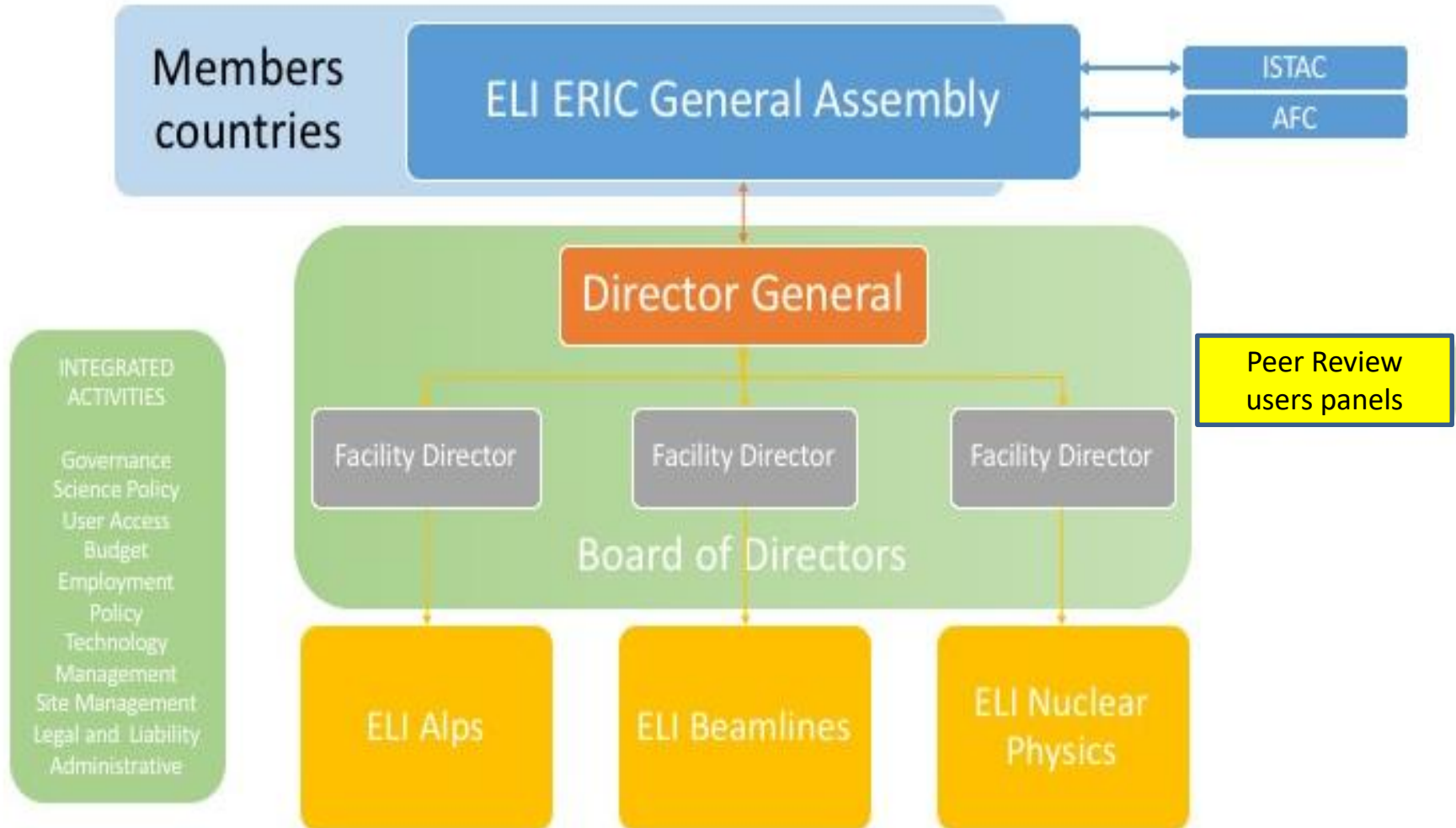
- Different time plans from construction to full operations for the ELI Facilities, following their own technical constraints and specifications
- Contractual references from construction grant agreements include different commitments and “sustainability periods”
- The financial situation now is different from that of 2006
- Commitments to support operations are different from Country to Country (both hosts and non-hosts)
- Some non-Host Countries have a “wait-and-see” position

**Very strong support and higher financial commitment from Hosts and EC, allowing a gradual financial ramp-up of non-Hosts’ commitments**

# What is an ERIC?

- Members/Observers are States (or intl. Org). Support expected also by Strategic Partners (e.g. USA).
- The ERIC is recognized by the State hosting the Seat as an international body/organization for the purpose of tax and public procurement rules exemptions.
- ERIC has legal personality and the most extensive legal capacity in all EU Member States.
- Not-for-profit organization (commercial activities shall be marginal and not tax exempt).
- Governed by EU law, by the Statutes and by the law of the States hosting the statutory Seat and the places of stable operations (e.g. individual employment contracts are governed by the law of the workplace of the employee).

- From the beginning (2019), the ERIC will start implementing the integrated Users access and related policies with one entry point for the calls and setting up the panels for the selection of proposals.
- The integration of the Facilities (and the availability of the experimental set-ups) will take place over 2-3 years gradually between 2019-2020.
- ELI ERIC will ensure a positive feedback between integration and internationalisation of the facilities.



ELI ERIC, as an organisation, will build on the existing resources in the three sites, using them in a coordinated way.

This organization is site-independent and allows to have the seat in any of the three Host Country Facilities

## **Next steps:**

- First “call for users” to be published in 2018
- Formal application for setting-up of ELI ERIC and approval by EU
- ERIC Start-up (establishing the internal “rules”, hiring the staff, setting-up the organization, etc.)
- Incremental availability and responsibility in operating the experimental facilities.
- Incremental entry of the other EU Countries and commitment to support the operation of the integrated ELI-ERIC



**Thanks for your attention!**